

GENERAL NOTES:

- PART SYMMETRICAL ABOUT CENTRELINE
- MATERIAL: HDPE
- PART VOLUME: 57.87 CUBIC MM
- PART WEIGHT: EST 0.06 G
- GENERAL WALL THICKNESS 0.50MM
- DRAFTS: VARIED
- CRITICAL SURFACES TO BE KEPT CLEAN / MARK FREE
- SEE 3D FILE FOR FURTHER DETAILS
- SEE TEX FILE FOR SURFACE FINISHES

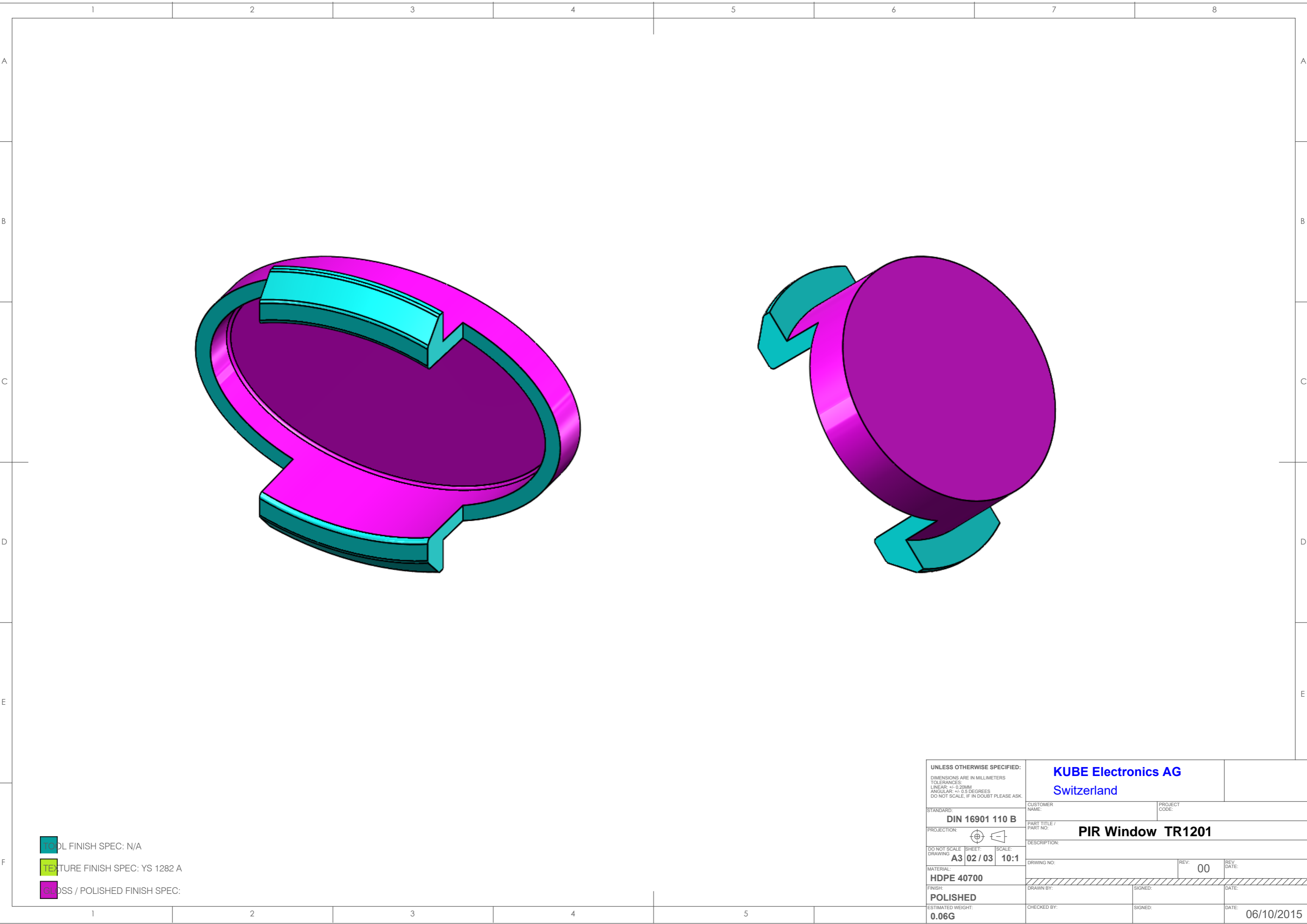
PART FINISHING NOTES:

- REMOVE ALL FLASH, BURRS AND SHARP EDGES
- LINISH FEED WITNESS

FOR REVISIONS SEE TRIANGULAR REF / REV SHEET

- **CRITICAL SURFACES:** - - - -

UNLESS OTHERWISE SPECIFIED:		KUBE Electronics AG	
DIMENSIONS ARE IN MILLIMETERS		Switzerland	
TOLERANCES:		CUSTOMER NAME:	PROJECT CODE:
LINEAR: ± 0.20 MM		PART TITLE / PART NO:	
ANGULAR: ± 0.5 DEGREES		PIR Window TR1201	
DO NOT SCALE, IF IN DOUBT PLEASE ASK.		DESCRIPTION:	REV: 00
STANDARD:	DIN 16901 110 B	DRIVING NO:	REV. DATE:
PROJECTION:		DATE:	
DO NOT SCALE DRAWING	SHEET: A3 01 / 03	SCALE: 5:1	CHECKED BY:
MATERIAL:	HDPE 40700	SIGNED:	DATE:
FINISH:	POLISHED	SIGNED:	DATE:
ESTIMATED WEIGHT:	0.06G	SIGNED:	DATE: 06/10/2015



- TOOL FINISH SPEC: N/A
- TEXTURE FINISH SPEC: YS 1282 A
- GLOSS / POLISHED FINISH SPEC:

UNLESS OTHERWISE SPECIFIED: DIMENSIONS ARE IN MILLIMETERS TOLERANCES: LINEAR: $\pm 0.20\text{MM}$ ANGULAR: ± 0.5 DEGREES DO NOT SCALE, IF IN DOUBT PLEASE ASK.		KUBE Electronics AG Switzerland	
STANDARD: DIN 16901 110 B		CUSTOMER NAME:	
PROJECTION:		PROJECT CODE:	
DO NOT SCALE DRAWING: A3 02 / 03		SCALE: 10:1	
MATERIAL: HDPE 40700		PART TITLE / PART NO: PIR Window TR1201	
FINISH: POLISHED		DESCRIPTION:	
ESTIMATED WEIGHT: 0.06G		DRAWING NO:	REV: 00
CHECKED BY:		DRAWN BY:	SIGNED:
SIGNED:		DATE: 06/10/2015	