

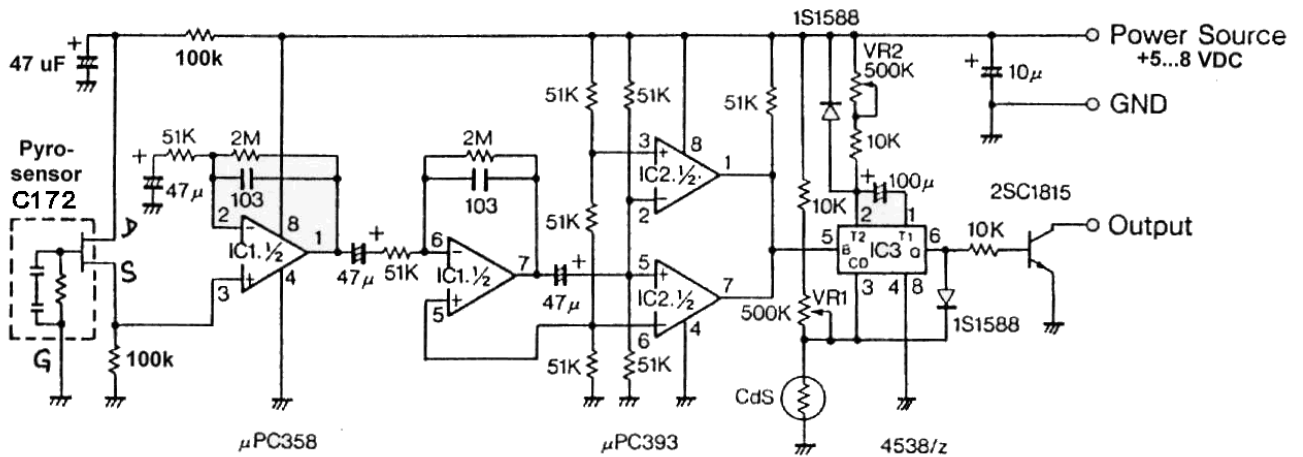


General PIR Application Schematics

The following circuits are very simple and basic PIR applications without bells and whistles.

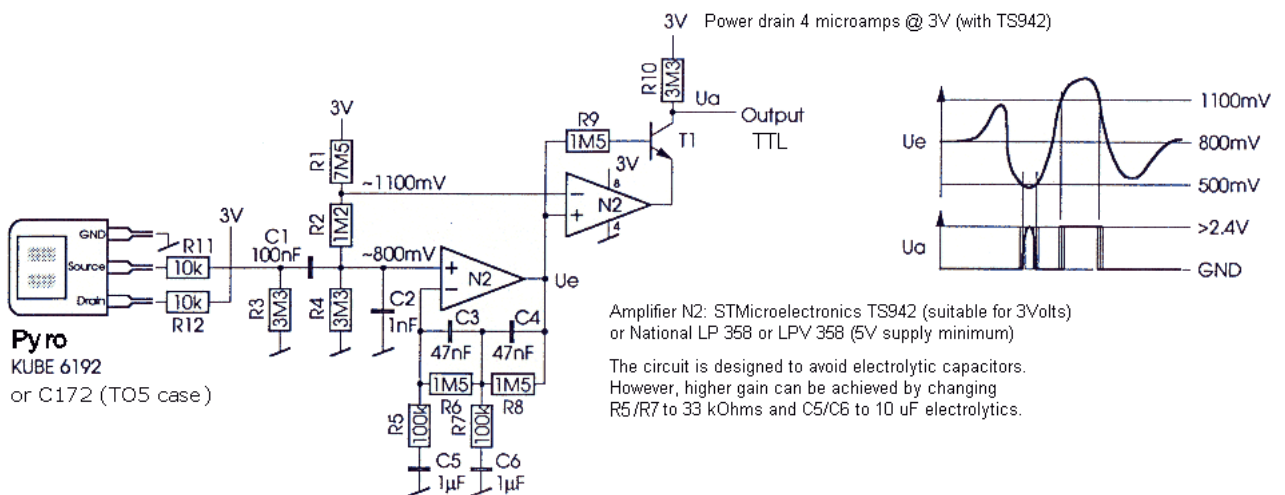
1 Standard PIR circuit configuration

A typical motion detector circuit with two-stage amplifier, window comparator and output timer. This configuration could be used for human body sensing which is used by light switches.



2 Low power/voltage circuit

This low power/voltage circuit can be used for low and medium range applications.





3 Simplified PIR circuit

This simplified PIR circuit delivers an output pulse when motion is detected.

